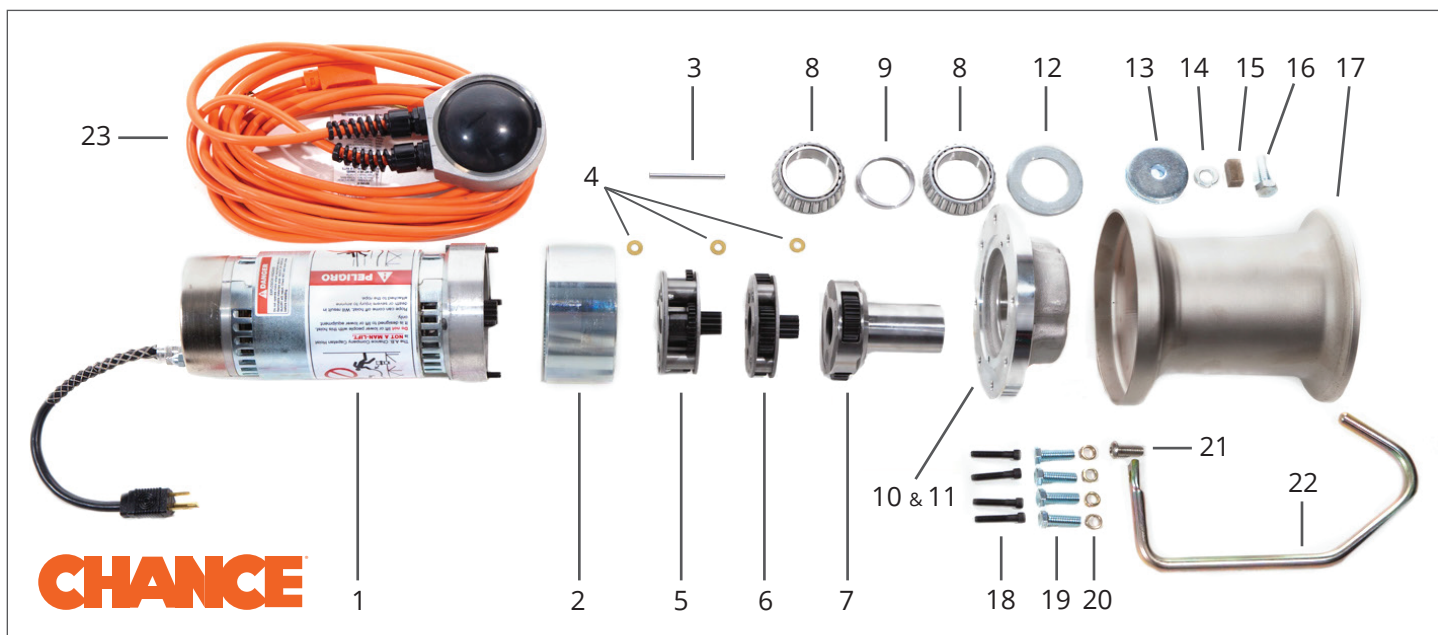


**PARTS LIST FOR C3081170**  
**CHANCE ® SERIES 90 :: 1,000LB. 115VAC ELECTRIC CAPSTAN HOIST**



ITEM#	DESCRIPTION	PART#	QTY
1	Motor Assembly 115v Complete	RMA-115v	1
2	Ring Gear (internal tooth) R74	P308-1341	1
3	Center Pin	P308-1226	1
4	Thrust Washer	P308-1029	3
5	1st Carrier Assembly	RCA-1ST	1
6	2nd Carrier Assembly	RCA-2ND	1
7	Output Shaft Assembly	RSA-1000#	1
8	Cone Bearing	P316-0299	2
9	Bearing Spacer (1000 lb)	P308-1025	1
10	Bearing Race (inside Item 11)	P316-0300	2
11	Output Housing (1000 lb)	P308-1028-B	1
12	Nilos Ring	P316-0298	1
13	Washer RD 0.531 x 2.375 Plated (for drum attachment)	P308-0287	1
14	Split Lockwasher 0.5" Plated	P001-0994	1
15	Drum Key (1000 lb)	P308-1157	1
16	Hex Capscrew 0.5"-13 x 1.25" Grade 5	P001-1521	1
17	Capstan Drum Assembly (1000 lb)	RDA-1000#	1
18	Socket Head Capscrew 0.25"-20 x 1.5"	P001-1542	4
19	Hex Head Capscrew 3/8"-16 x 1.25" Grade 5 Zinc Plated	P001-1161	4
20	Lock Washer 3/8" HC Plated	P001-1195	4
21	Button-Head Socket Capscrew SS 3/8"-16 x 1"	P308-1517	1
22	Rope Hook Assembly (1000 lb) (Includes item #21)	RHA-1000#	1
23	Electric Foot Switch Repair Kit (See footswitch breakdown for individual parts)	RFS-ELEC	1
24	Grease (not pictured)	C303-1234	4oz can
25	Decal and Literature Replacement Kit for C308-1170 (not pictured)	RMD-1170	1